



Archi's  
**TLC**  
The Lotus County

STUDIO APARTMENT

A home for holiday

[www.archigroup.in](http://www.archigroup.in)





# Archi's The Lotus County

A home for holiday

Archi Group introducing Private Luxury Studio Apartments located in the comforts of suburban living where abandoned nature and luxury co-exist beautifully.

The Lotus County (TLC) is one of a kind Luxurious Lifestyle gated Eco-conscious destination offering luxury Studio apartment for your leisure stay at the City of Lakes, Udaipur.

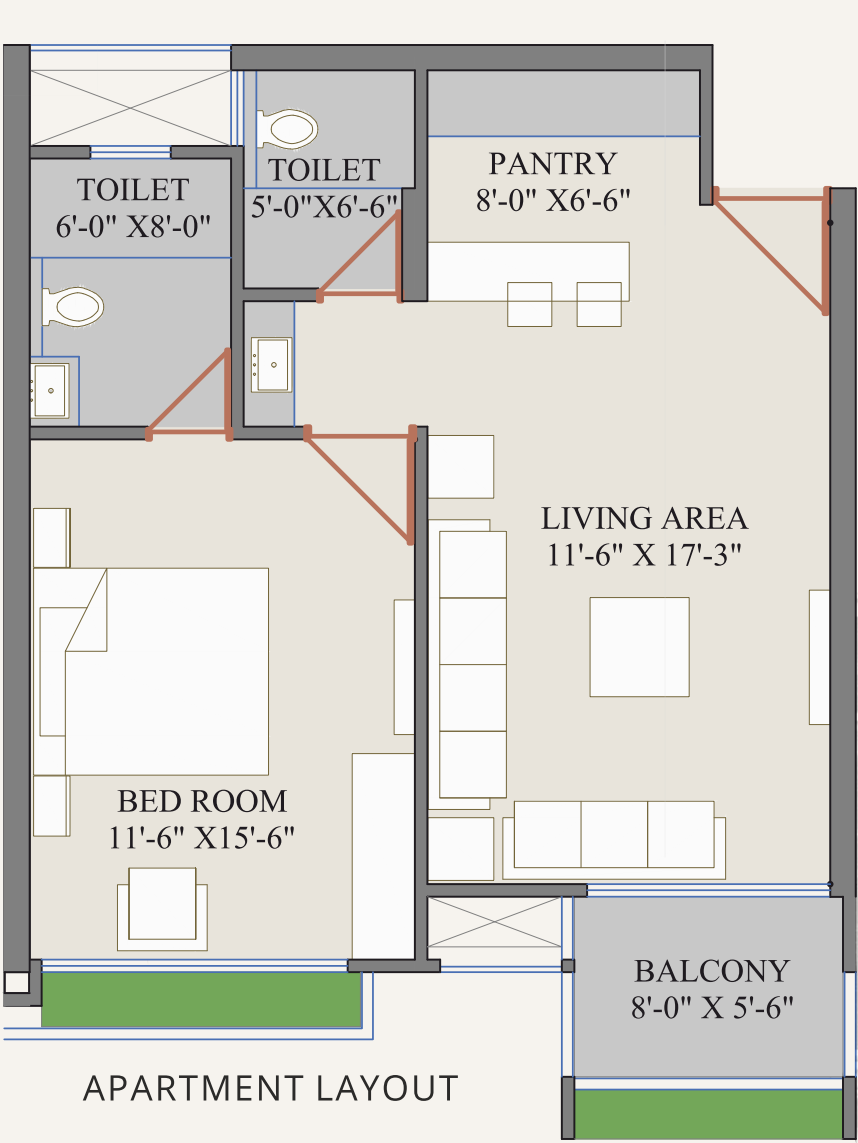
It is a estate well connected to the main city where every apartment is designed to slide from bed to experience the open clouds with serene atmosphere & mesmerizing views.

Owning a premium studio apartment in TLC, we promise to take you to the unknown world with your stay in the paradise of luxury.

- Where you'll be experiencing heavenly beauty of the nature with all modern amenities.
- Where the stunning view of Aravalli Hills will fill your soul and calmness.
- Whistling woods and clean air refresh every inch of your body.
- The rhythmic chirping of birds will make your worries lose their way in the nestle.







AREA CHART

UNIT	CARPET AREA	BALCONY AREA	BUILT-UP	SUPER BUILT-UP
1BHK	53.31 sqm	7.36 sqm	740 sqft	1110 sqft

Highlights -

- Project approved by UIT Udaipur
- Ample parking space
- 15 mins. drive from the town and airport.
- Located 700 meters before beautiful Udaisagar lake.
- Scenic mountain and dense green view.
- Well connected with Udaipur and surroundings.



## Specifications

- Earthquake resistant RCC structure.
- 1200mm x 600mm and 800mm x 800mm vitrified tiles in rooms.
- Weather sealed textured wall coatings
- Both sides laminated flush doors for internal opening.
- Windows with aluminum slider door for outer balcony
- Designer Sanitary ware of Cera, Jaquar, Hindware or Equivalent.
- CP Fittings of Jaquar, Grohe, Kohler or Equivalent.
- Electrical cables of RR Kabel, Finolex or equivalent.
- Electrical switches of GM/MK or equivalent.
- Two auto-door elevators of Schindler.
- Intercom facility
- Firefighting system
- Main Entrance Plaza
- CCTV camera for common areas.
- Adequate power backup for common areas
- 24x7 guarded premises
- Customer Support Services



## A home for holiday

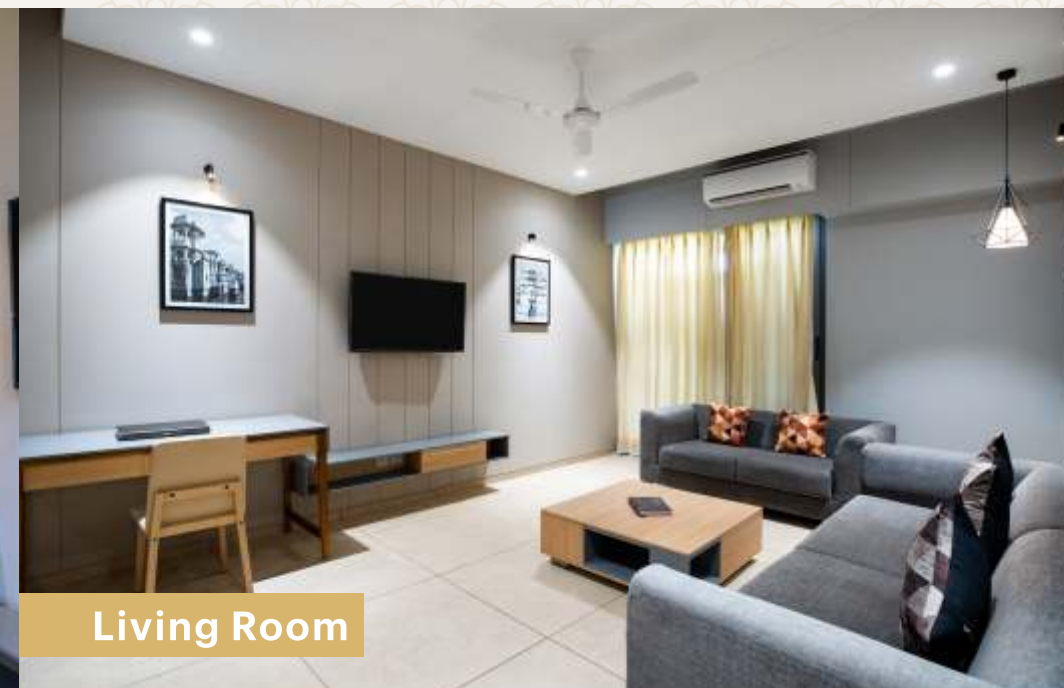


Bedroom

Disclaimer\*: All pictures shown are for illustration purpose only. Actual product may vary



Kitchenette



Living Room







**Archi's The Lotus County**  
Zinc Debari - Udaisagar Lake Road  
Udaipur - 313024 (Rajasthan)

RERA: RAJ/P/2020/1245  
[www.rerarajasthan.gov.in](http://www.rerarajasthan.gov.in)



Architectural Consultant:

**placekinesis associates pka**  
Ahmedabad, Gujarat

Structural Consultant:

**Sanrachna**  
Udaipur, Rajasthan

MEP Consultant:

**transenergy**  
m e p c o n s u l t a n t s  
Ahmedabad, Gujarat

Contractor:

**Bhumikesh Construction Company**  
Udaipur, Rajasthan



Developer

**ARCHI BUILD MART PVT. LTD.**

(A unit of ARCHI Group)

Ground Floor, Archi Arihant Building

100 ft. Road towards DPS

Sobhagpura Circle, Udaipur - 313001

Ph.: +91 98290 22203, +91 94142 63254

Web: [archigroup.in](http://archigroup.in)

For Booking: **+91 94141 55525 | 75065 04498 | 99284 72452**